

# TREBLER FABRICATIONS

UNIT 42 · CROSSGATE ROAD · PARK FARM INDUSTRIAL ESTATE · REDDITCH · WORCS · B98 7SN

t 01527 503 303 · f 01527 503 325 · w [www.treblerfabrications.co.uk](http://www.treblerfabrications.co.uk)

## QW MANUAL CABLE WINCH OPERATION

Generally the QW Winch / Crank Handle Operation will be required to control the position of non-return valves. Better known as Flap Valves in the trade.

The winch may be mounted in any position as long as the operator is standing in a comfortable position with unobstructed access and a clear view of the winch cable.

The mounting location for the winch and any attached structure must be capable of handling the static and dynamic forces imposed by the load of the job it is intended for, seeking suitable engineering guidance.

Generally the cable winch will be mounted onto a plinth / stand / pillar and can be complete with suitable protection from vandalism via a cover.

To reduce efforts enforced on the operating handle, many cable winches will be supported complete with an outreach bracket.

All materials are available on request and must be specified by the end user.



# CABLE WINCH OPERATION

CAT 4800-S1

**Hand Winch Type QW for  
Flap Valve Lifting  
Specification**

**See Dimensional Drawing**

Part No. - 0220015

Type - QW1700

Lifting Capacity 1<sup>st</sup> layer - 1.7 tonne

Lifting Capacity last layer - 1.29 tonne

Drive Group DIN 15020 - 1 Em

Wire Rope Diameter - 12mm

Wire Rope Capacity 1<sup>st</sup> layer - 7 Metres

Wire Rope Capacity total - 20 Metres

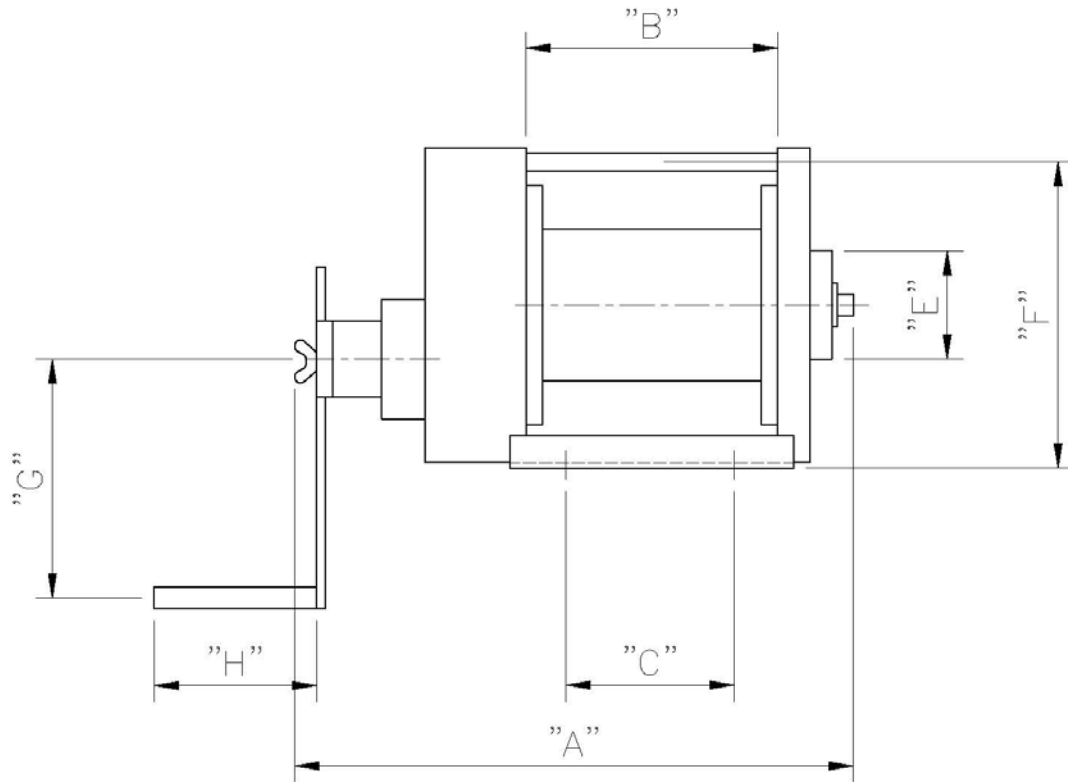
Lift per Crank turn - 16mm

Required effort - 15Kg

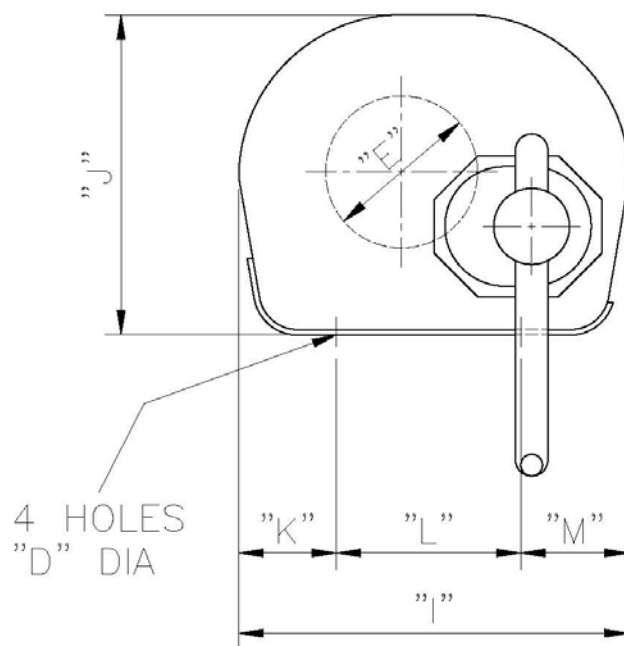
Weight of Unit - 46Kg

**Hand Winch Type QW for  
Flap Valve Lifting  
Drawing Detail**

**Part No. – 0220015  
Type-QW1700**



FRONT VIEW



END VIEW

**Hand Winch Type QW for**  
**Flap Valve Lifting**

**Dimensions : See Dimensional Drawing**

Part No. - 0220015

Type - QW1700

A = 509mm

B = 205mm

C = 155mm

D = 18mm

E = 139mm

F = 230mm

G = 350mm

H = 150mm

I = 362mm

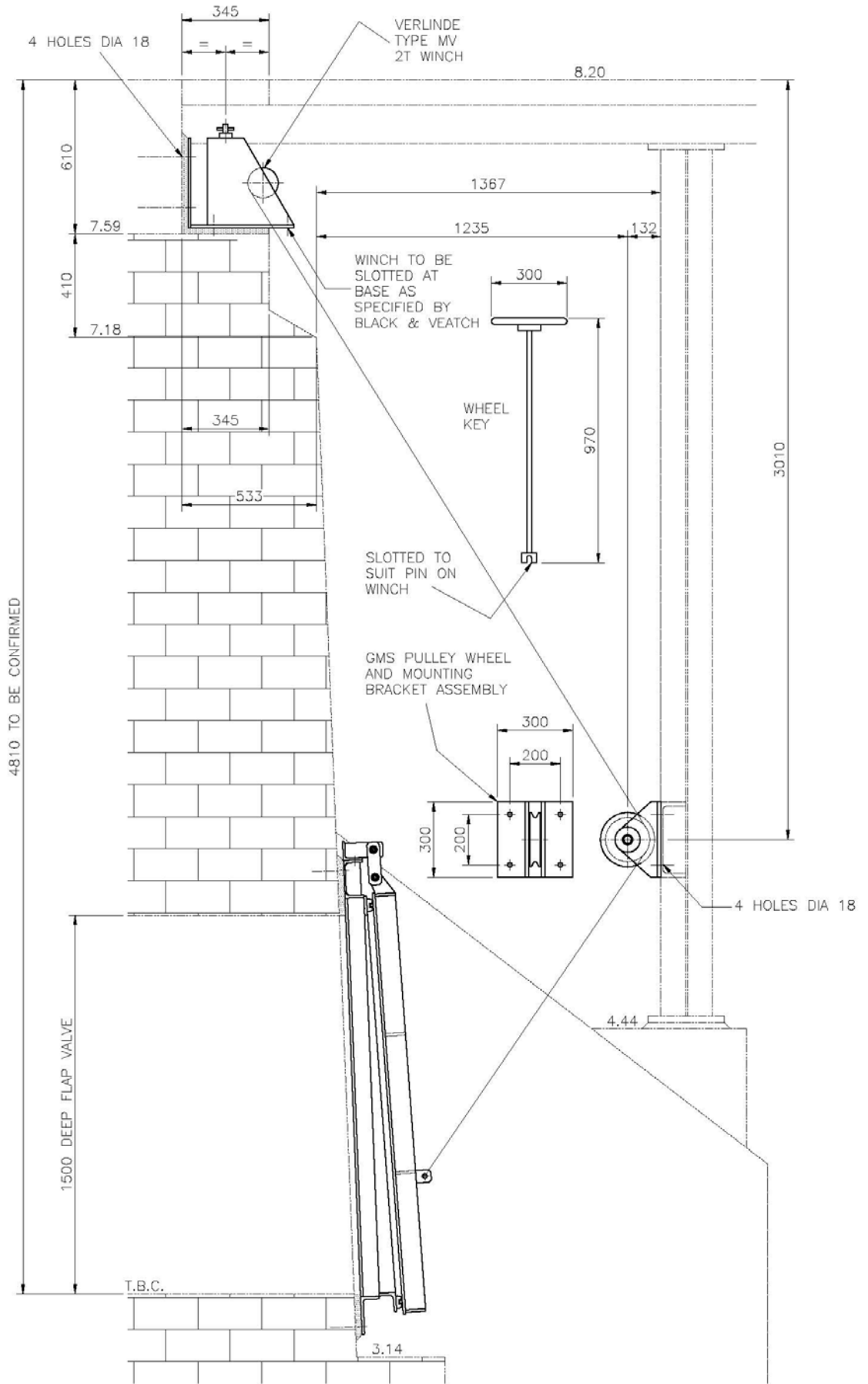
J = 296mm

K = 96mm

L = 170mm

M = 93mm

# WINCH OPERATED FLAP VALVE



**Typical Drawing only of a Winch operated Flap Valve**