

TREBLE R FABRICATIONS

UNIT 42 – CROSSGATE ROAD – PARK FARM INDUSTRIAL ESTATE – REDDITCH – WORCS – B987SN

tel 01527 503 303 – fax 01527 503 325 – web www.treblefabrications.co.uk

LIGHT DUTY CHANNEL

MOUNTING PENSTOCK

The primary application of penstocks is the flow control and isolation of fluids associated with water, waste water, sewage treatment plant, power generation, irrigation schemes and process plant.

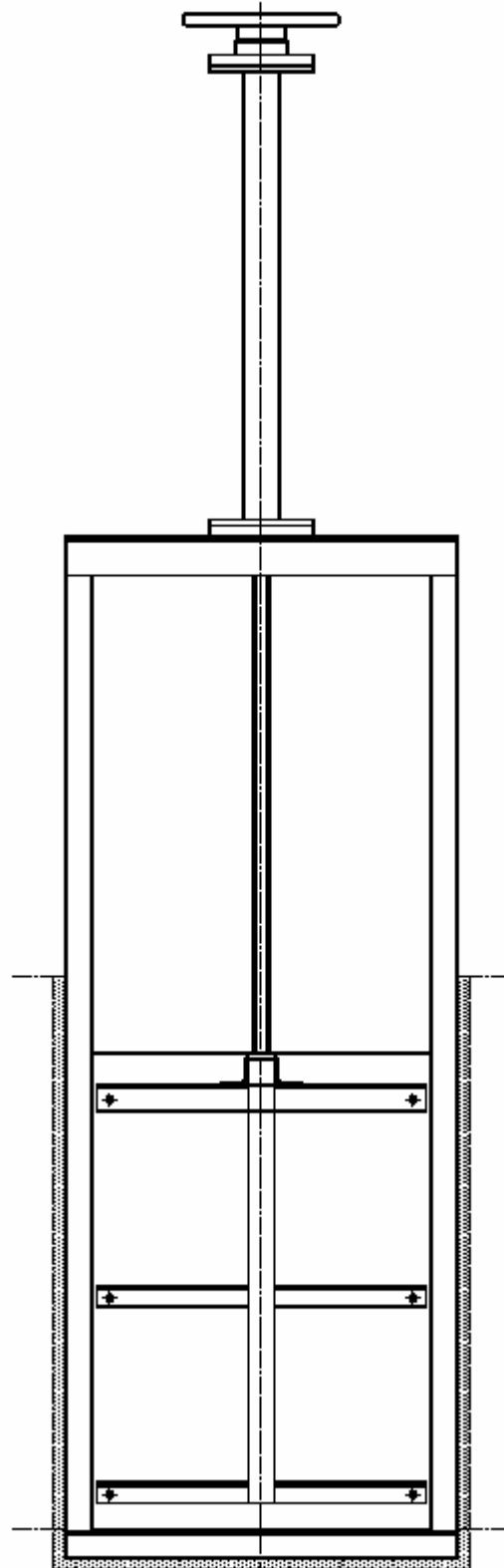
The modern penstock is designed for door depth on and off-seating heads in sizes from 150mm up to 900mm square.

Selection of the correct penstock to suit the duty is important to satisfy the design criteria and provide the most cost effective solution. Operation of the penstock is governed generally by factors outside the control of the penstock manufacturer. However, the range of penstocks operating equipment is extensive: from simple direct operation by handwheel to complex control systems for electrical, pneumatic or hydraulic actuation. The range of penstocks with associated operating equipment will cater for the most demanding specification and application.

Any of our standard penstock units can be mounted in a channel. However the 4700-PSK1 light duty range are specifically designed for this purpose.

Channel mounted penstocks are fixed into preformed rebates in the sides and inverts of channels by means of a sand/cement non shrink grout to effect a seal between the rebate and the penstock frame.

The frame can be manufactured from either galvanised mild steel, painted mild steel or grade 304/316 stainless steel, complete with an optional gate in the same material or a light HDPE plastic material.



LIGHT DUTY C/M PENSTOCKS

Channel Mounting Penstocks

Light Duty Range

Operating Duty

Application:	Flow control and isolation
Type of Mounting:	Side and invert rebates
Type of Media:	Water and Sewage
Operating Head:	Up to top of door
Direction of Flow:	On & off-seat

Options

Mounting:	Side wall mounted in channel
Stem Types:	Rising and non-rising
Size Range:	Any size from 150mm to 900mm in square or rectangular format

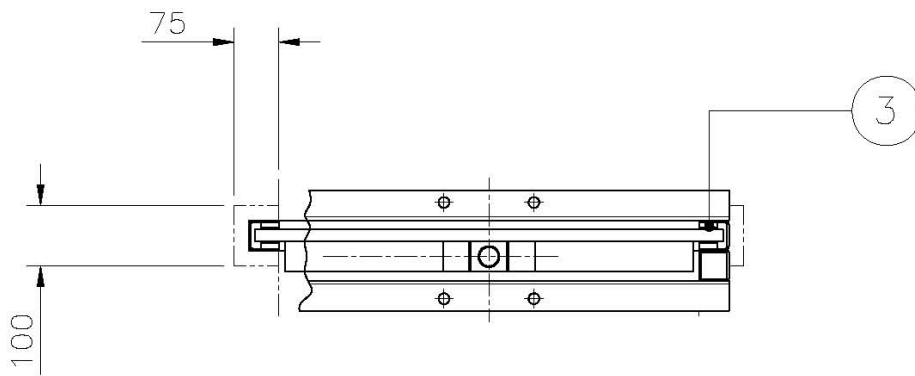
Applicable Standards

BS 7775: 1995, Specification for general
purpose penstocks

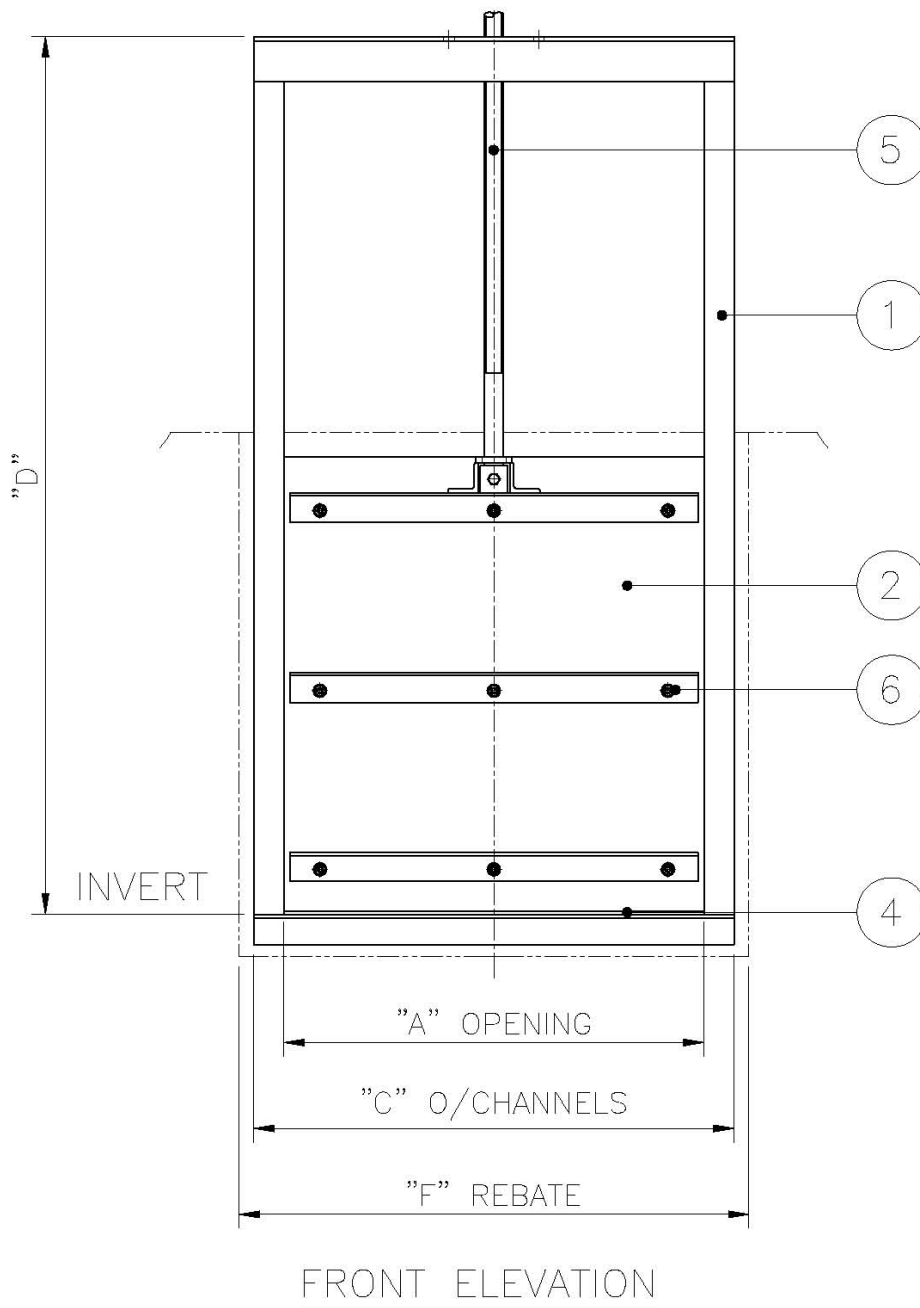
Construction Materials

<u>ITEM</u>	<u>DESCRIPTION</u>	<u>MATERIAL</u>
1	Frame	Mild Steel, BS 4360 Gr 43A Stainless Steel, BS 970 Gr 304 Stainless Steel, BS 970 Gr 316
2	Door	HMWP with reinforcement Mild Steel, BS 4360 Gr 43A Stainless Steel, BS 970 Gr 304 Stainless Steel, BS 970 Gr 316
3	Side Seals	Low Friction Polyolefin
4	Invert Seal	Neoprene
5	Stem	Stainless Steel, BS 970 Gr 303 Stainless Steel, BS 970 Gr 304 Stainless Steel, BS 970 Gr 316
6	Fasteners	Stainless Steel, BS 6105, Gr A4

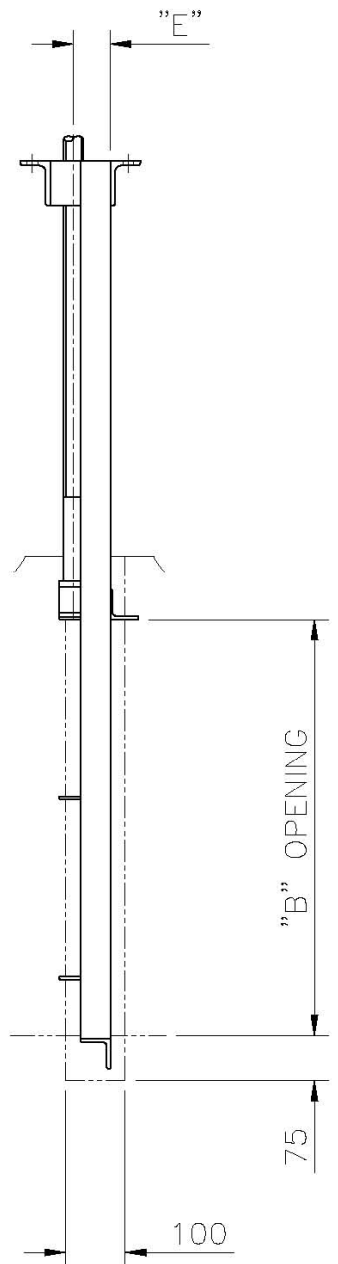
Light Duty Range Channel Mounting Penstocks



PART SECTION & PLAN VIEW



FRONT ELEVATION

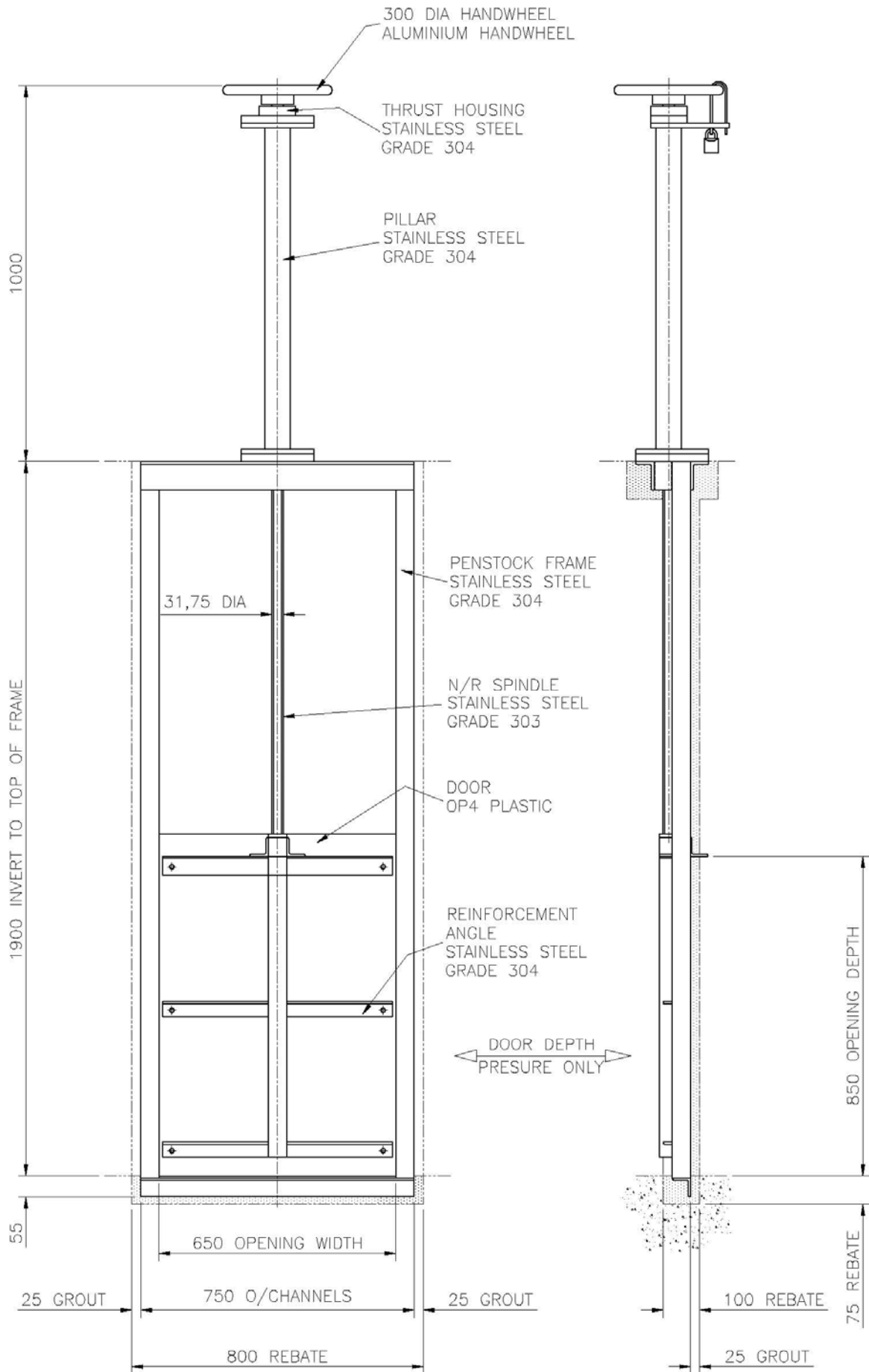


SIDE ELEVATION

Channel Mounting Penstocks
Light Duty Range

RANGE	LIGHT
A	Opening Width
B	Opening Depth
C	A + 100
D	2B + 60
E	60
F	A + 150

Channel Mounting Penstocks Light Duty Range



**Typical Drawing of a 650mm wide x 850mm deep
Channel Mounting Light Duty Penstock.**