

TREBLE R FABRICATIONS

UNIT 42 – CROSSGATE ROAD – PARK FARM INDUSTRIAL ESTATE – REDDITCH – WORCS – B987SN

tel 01527 503 303 – fax 01527 503 325 – web www.treblefabrications.co.uk

HEAVY DUTY WALL

MOUNTING WEIR PENSTOCK

The primary application of penstocks is the flow control and isolation of fluids associated with water, waste water, sewage treatment plant, power generation, irrigation schemes and process plant.

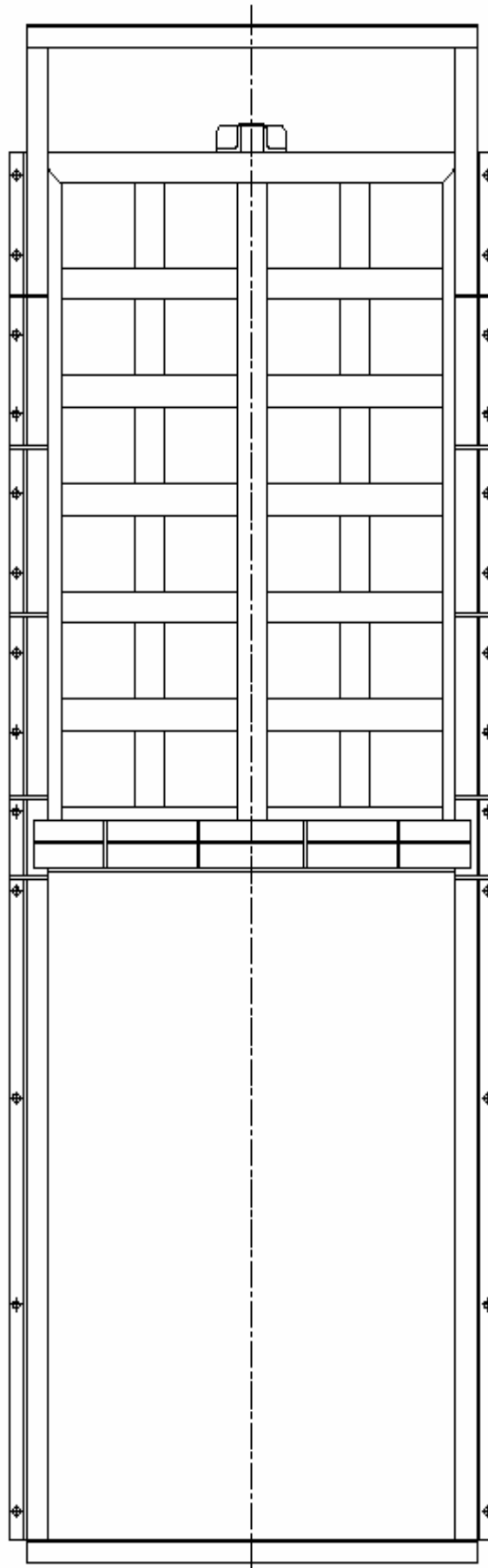
This range has been specially developed for penstocks greater than 2000mm in size, both with and height. The head is limited to door depth on seating and door depth off seating as standard.

To produce such a penstock from cast iron would be a very expensive exercise and therefore the need for a heavy duty penstock becomes viable.

Selection of the correct penstock to suit the duty is important to satisfy the design criteria and provide the most cost effective solution. Operation of the penstock is governed generally by factors outside the control of the penstock manufacturer. However, the range of penstocks operating equipment is extensive: from simple direct operation by handwheel to complex control systems for electrical, pneumatic or hydraulic actuation. The range of penstocks with associated operating equipment will cater for the most demanding specification and application.

Wall mounting Weir Penstocks are fixed to vertical end walls of channels, chambers or similar structures by means of foundation bolts utilising a sand/cement non shrink grout to effect a seal between the wall and penstock frame.

The frame can be manufactured from either galvanized mild steel, painted mild steel or grade 304/316 stainless steel, complete with an optional gate in the same material.



HEAVY DUTY WALL MOUNTING WEIR

Wall Mounting Weir Penstock
Heavy Duty Range

Operating Duty

Application:	Flow control and isolation
Type of Mounting:	Wall
Type of Media:	Water and Sewage
Operating Head:	Top of door on-seating Top of door off seating

Options

Stem Types:	Rising and non-rising
Size Range:	Any size from 2000mm to 3500mm in square or rectangular format
Operating Head	Top seals available to suit higher pressures than door depth

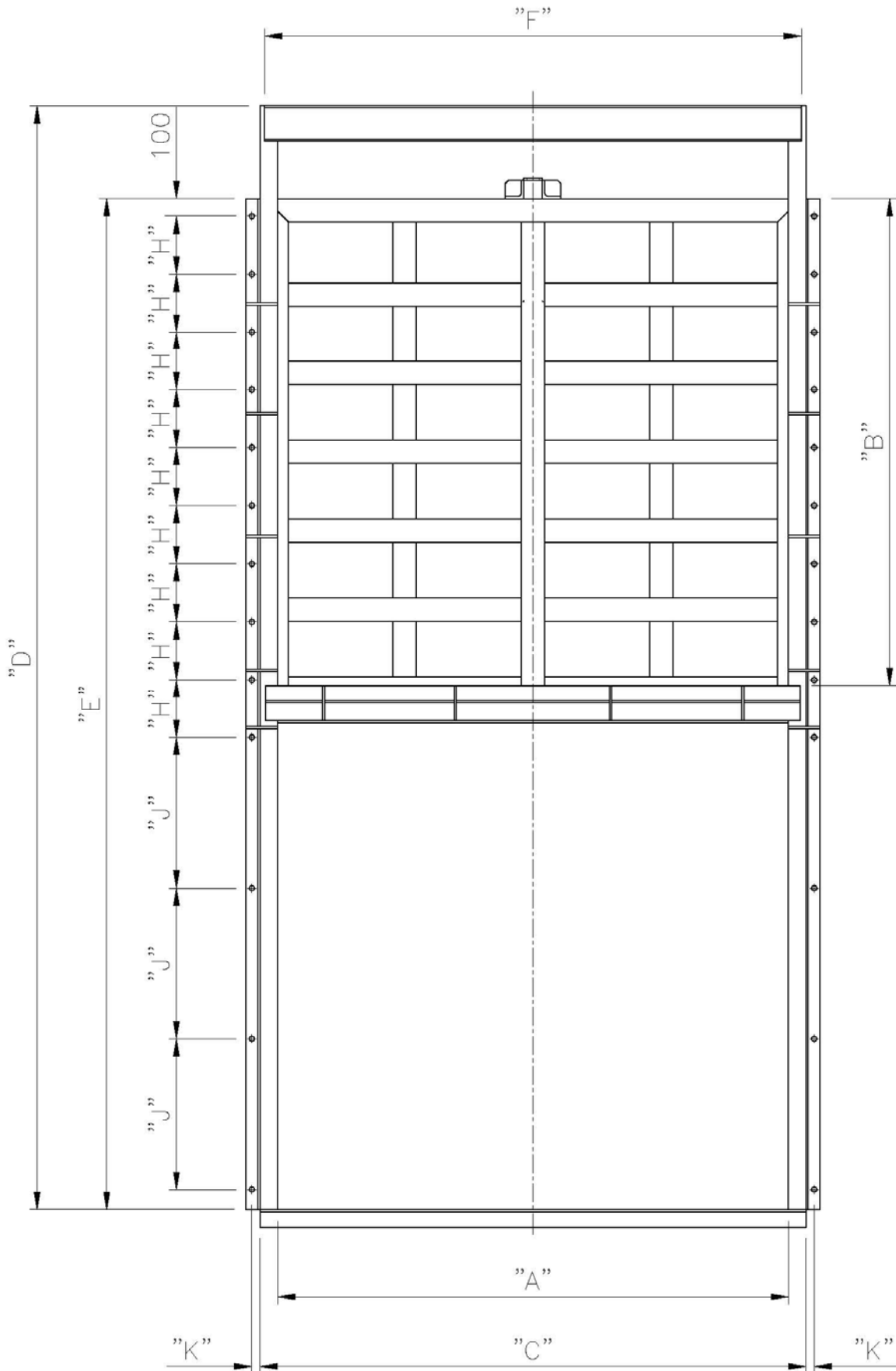
Applicable Standards

BS 7775: 1995, Specification for general
purpose penstocks

Construction Materials

<u>ITEM</u>	<u>DESCRIPTION</u>	<u>MATERIAL</u>
1	Frame	Mild Steel, BS 4360 Gr 43A Stainless Steel, BS 970 Gr 304 Stainless Steel, BS 970 Gr 316
2	Door	Mild Steel, BS 4360 Gr 43A Stainless Steel, BS 970 Gr 304 Stainless Steel, BS 970 Gr 316
3	Seals	Low Friction Polyolefin
4	Stem	Stainless Steel, BS 970 Gr 303 Stainless Steel, BS 970 Gr 304 Stainless Steel, BS 970 Gr 316
5	Fasteners	Stainless Steel, BS 6105, Gr A4

HEAVY DUTY PENSTOCKS
WALL MOUNTING WEIR – OPEN TOP

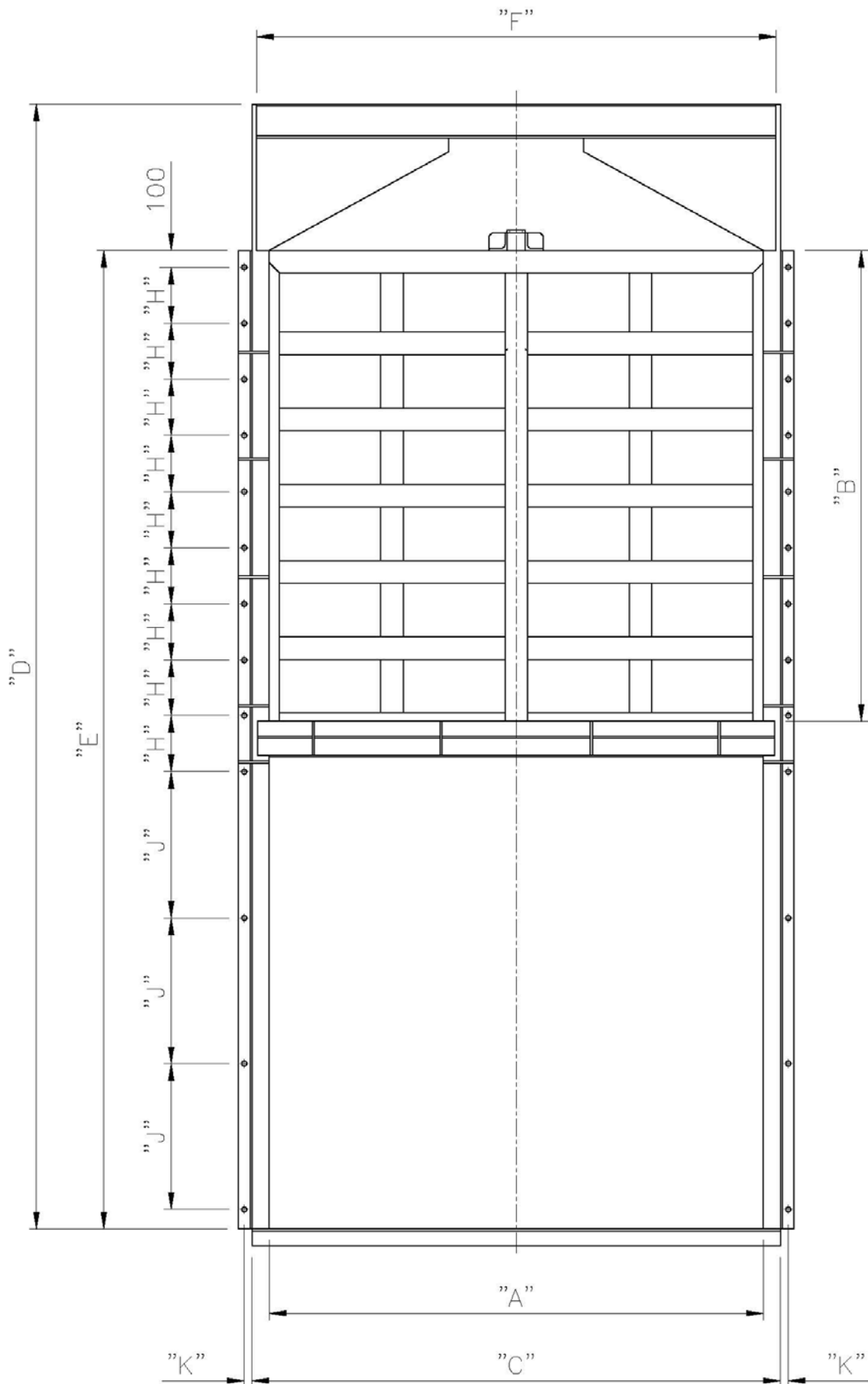


HEAVY DUTY PENSTOCKS
WALL MOUNTING WEIR– OPEN TOP

RANGE				
	XL80	XL100	XL120A	XL120B
A	OPENING WIDTH	OPENING WIDTH	OPENING WIDTH	OPENING WIDTH
B	OPENING DEPTH	OPENING DEPTH	OPENING DEPTH	OPENING DEPTH
C	A + 152	A + 200	A + 200	A + 250
D	2B + 556	2B + 590	2B + 615	2B + 640
E	2B + 162	2B + 210	2B + 210	2B + 235
F	A + 120	A + 170	A + 170	A + 220
H	*	*	*	*
J	*	*	*	*
K	49	65	65	65

*** SUBJECT TO HEAD CONDITION AND CUSTOMER REQUIREMENTS**

HEAVY DUTY PENSTOCKS
WALL MOUNTING WEIR – CLOSED TOP



HEAVY DUTY PENSTOCKS
WALL MOUNTING WEIR – CLOSED TOP

	RANGE			
	XL80	XL100	XL120A	XL120B
A	OPENING WIDTH	OPENING WIDTH	OPENING WIDTH	OPENING WIDTH
B	OPENING DEPTH	OPENING DEPTH	OPENING DEPTH	OPENING DEPTH
C	A + 152	A + 200	A + 200	A + 250
D	2B + 718	2B + 1000	2B + 1025	2B + 1115
E	2B + 162	2B + 210	2B + 210	2B + 235
F	A + 120	A + 170	A + 170	A + 220
H	*	*	*	*
J	*	*	*	*
K	49	65	65	65

*** SUBJECT TO HEAD CONDITION AND CUSTOMER REQUIREMENTS**

