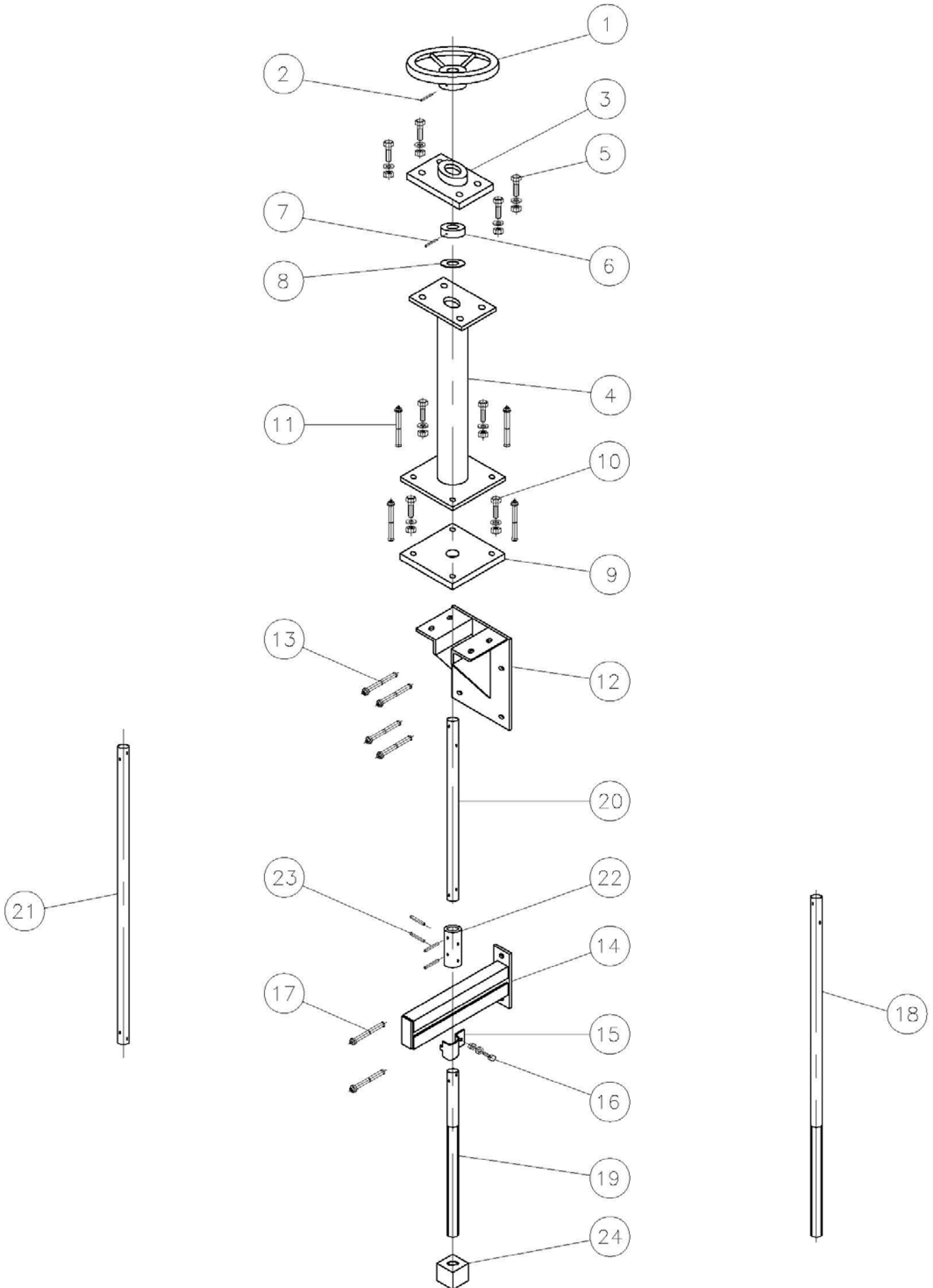


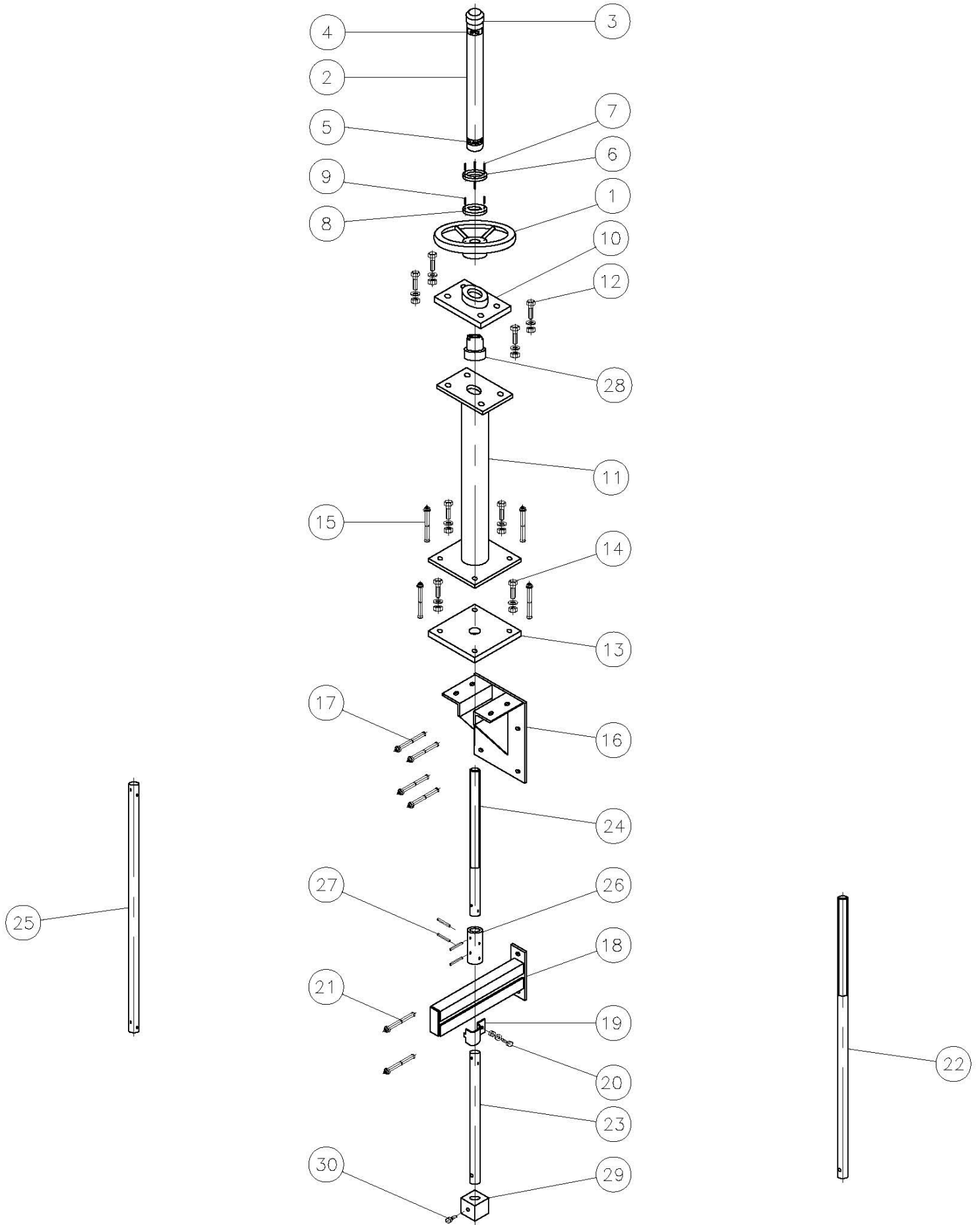
Handwheel – Non Rising Type Arrangement



Handwheel – Non Rising Type Arrangement Part Number Listing

Part No:	Description
1	Handwheel
2	Pin for item 1
3	Thrust Housing
4	Pillar
5	Bolts, N & W for item 3
6	Thrust Collar
7	Pin for item 6
8	Thrust Washer
9	Guide Plate
10	Bolts for item 4 to item 12
11	Fixing bolts for item 4
12	Footplate
13	Fixing bolts for item 12
14	Guide Bracket
15	Guide Bracket Cup
16	Bolt, N & W for item 15
17	Fixing bolts for item 14
18	Non-Rising stem (Direct)
19	Non-Rising stem (In-Direct)
20	Extension Spindle (No 1)
21	Extension Spindle (No 2)
22	Muff Coupling
23	Pins for item 22
24	Stem Nut

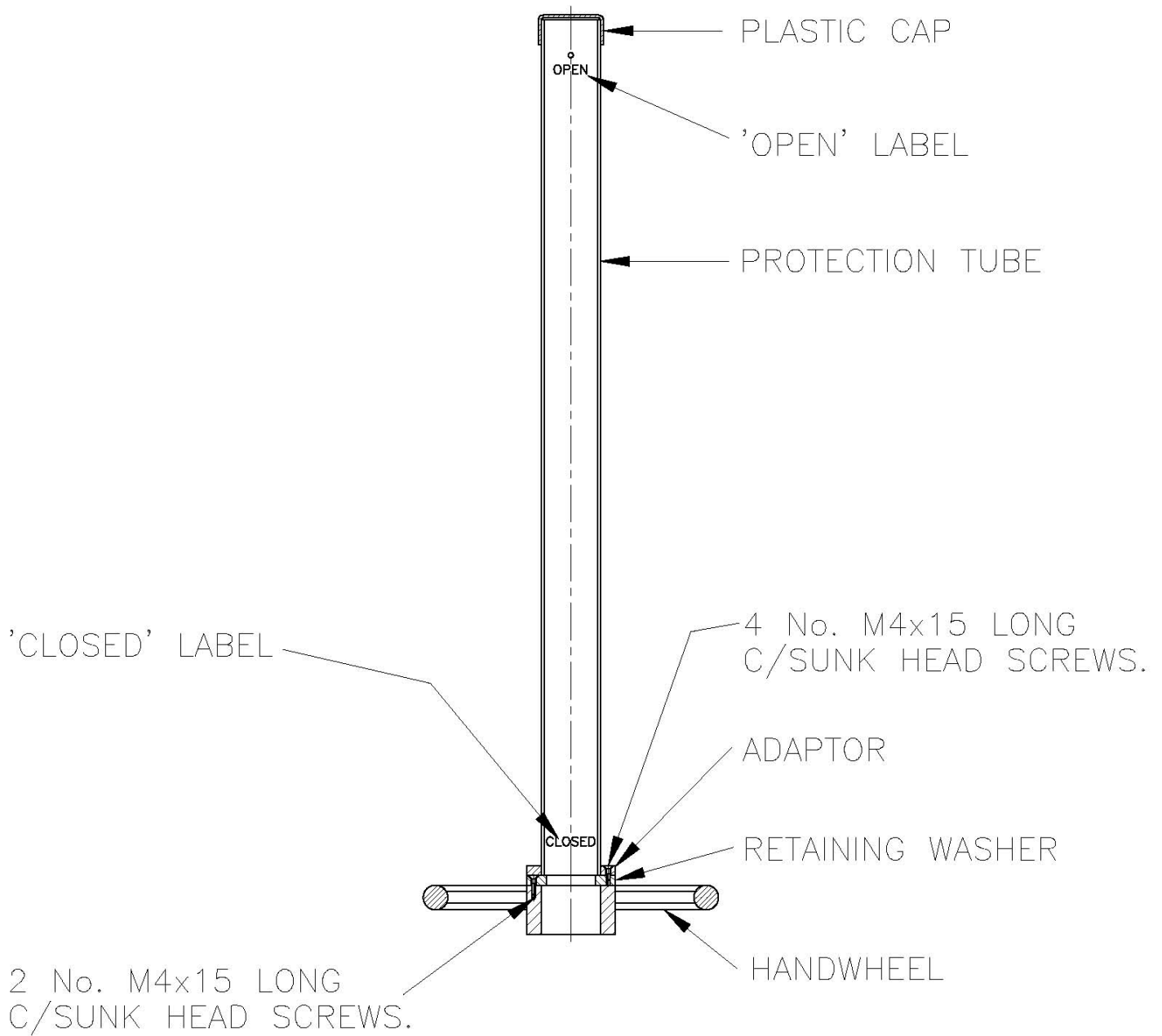
HANDWHEEL – RISING TYPE ARRANGEMENT



HANDWHEEL-RISING TYPE ARRANGEMENT PART LISTING

Part No	Description
1	Handwheel
2	Protection Tube
3	Protection Tube Cap
4	Indication Label Top
5	Indication Label Bottom
6	Indicator Plate
7	Screws for item 6
8	Retaining Plate
9	Screws for item 8
10	Thrust Housing
11	Pillar
12	Bolt, N & W for item 10
13	Guide Plate
14	Bolts, N & W for item 11 to item 16
15	Fixing bolts for item 11
16	Footplate
17	Fixing bolts for item 16
18	Guide Bracket
19	Guide Bracket Cup
20	Bolt, N & W for item 19
21	Fixing bolts for item 18
22	Rising Stem (Direct)
23	Rising Stem (In-Direct)
24	Extension Stem (No 1)
25	Extension Stem (No 2)
26	Muff Coupling
27	Pins for item 26
28	Handwheel Nut
29	Stem Block
30	Bolt for item 29

Handwheel / Clear Protection Tube Assembly



NOTE:

FOR WEIR PENSTOCKS: CLOSE LABEL AT TOP, OPEN LABEL AT BOTTOM.