

Handstops

Wall and channel fixing

For door depth pressures only

Standard Size Range

100mm square up to 900mm square or any rectangular size within these limitations.

Mounting

Standard fixing arrangements are:-

- a. Channel fixing into prepared rebates in channel walls and floor (Type 'C')
- b. Wall fixing onto a flat vertical wall with invert recessed into floor (Type 'W')

Special fixing arrangements are:-

- c. Side wall fixing at invert
- d. Wall fixing at invert
- e. Any combination of a), b), c) and d).

Frames

Manufactured from mild steel to BS4360 GR43A or stainless steel to BS970 or BS1449 Grades 304 or 316

Mild steel frames, can be blast cleaned after fabrication to SA2.1/2 minimum quality, zinc sprayed to 100 microns nominal thickness (75 microns minimum), etch primed and finished with two coats of coal tar epoxy or high build bituminous paint (potable water), 75 microns DFT per coat.

Mild steel frames are also available in hot dipped galvanised finish to BS1461.

Stainless steel frames are natural finish.

Frame Seals

Are resilient (Neoprene/HDPE) biscuit type seals.

Seals are bonded to the seating and unseating sides of the frame.

Doors

Manufactured from rigid HDPE with horizontal reinforcing ribs as necessary.

Minimum thickness is 20mm.

Invert Seal

Neoprene resilient sponge, bonded to the bottom edge of the frame.

Lifting Handles

Integral handholes or tee type handles in the same metal and finish as the frame.

Fixing Bolts

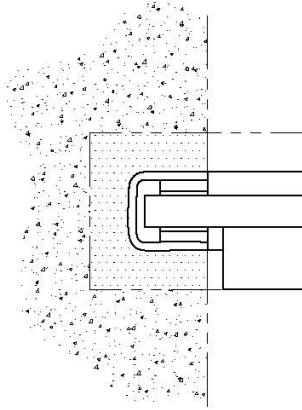
For wall fixing frames the standard bolts are Liebig anchors (AB type) in zinc plated finish or stainless steel GR.316. Note: zinc plated bolts must be painted immediately after installation.

Handstops manufactured as above are suitable for on/off seating door depth pressure and can be used in sewage, potable water and other applications. Special designs and materials are available to suit special requirements.

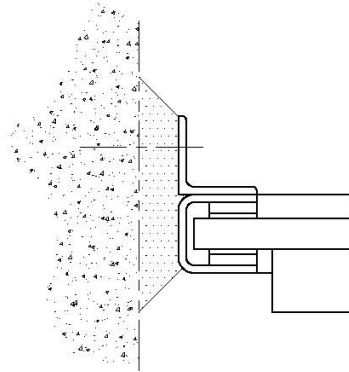
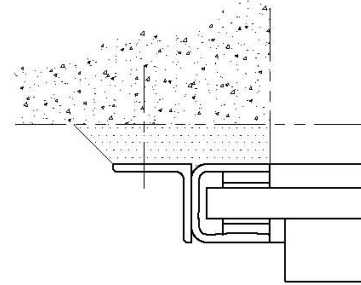
Wall and Channel Fixing
For door depth pressures only

TYPE OF FIXING
ARRANGEMENTS

CHANNEL
MOUNTED

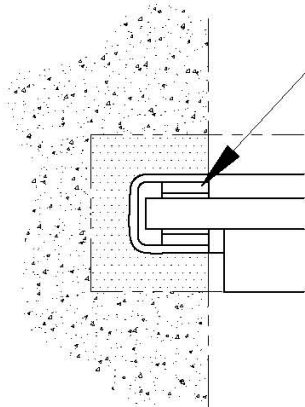


WALL
MOUNTED



SIDE WALL
MOUNTED

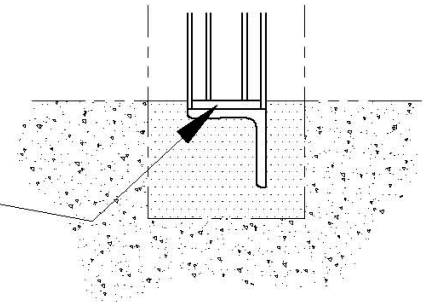
FRAME SEALING
ARRANGEMENTS



FRAME
SIDE SEALS

RESILIENT SEALS
BONDED TO INSIDE
FACES OF FRAME

RESILIENT SEALS
BONDED TO INVERT
SECTION OF FRAME



FRAME
INVERT SEAL