

TREBLE R FABRICATIONS

UNIT 42 – CROSSGATE ROAD – PARK FARM INDUSTRIAL ESTATE – REDDITCH – WORCS – B987SN

tel 01527 503 303 – fax 01527 503 325 – web www.treblefabrications.co.uk

BAR / TRASH SCREENS

Many inlets or indeed sewage treatment plants call for a simple bar screen or better known as a trash screen.

In addition to these plants, bar screens may be installed at the mouth of a river.

These screens will prevent unwanted debris entering the downstream area and can easily be racked from time to time manually.

Generally Bar / Trash screens are supplied in mild steel which are treated to BS 1461 hot dipped galvanized.

Alternatives are grade 304ss and 316ss in aggressive environments.

All manufacture is bespoke and each installation will call for a special size and shape. This can be offered by providing a detailed drawing. The alternative is a site survey.



BAR / TRASH SCREENS

Bar Trash Screens

Operating Duty

Application:	Debris Restriction
Type of Mounting:	Side and invert rebates
Type of Media:	Water and Sewage
Direction of Flow:	On seat

Options

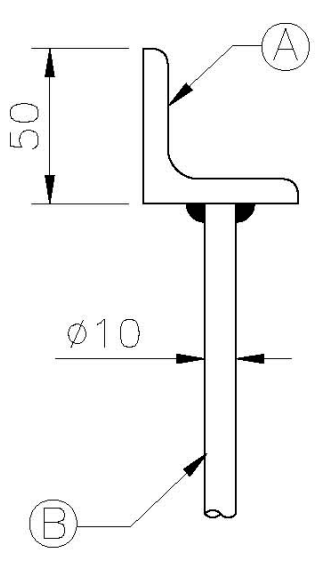
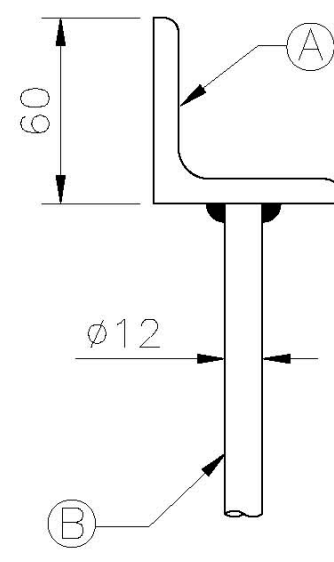
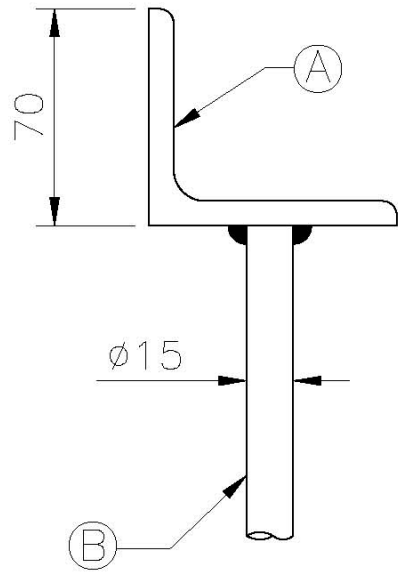
Mounting:	Side wall mounted in channel
Size Range:	Any size from 150mm to 2000mm in square or rectangular format

Construction Materials

ITEM	DESCRIPTION	MATERIAL
1	Bar Screen	Mild Steel, BS 4360 Gr 43A Stainless Steel, BS 970 Gr 304 Stainless Steel, BS 970 Gr 316
2	Fasteners	Stainless Steel BS 6105, Gr A4

BAR TRASH SCREENS

STANDARDS AVAILABLE ARE

SMALL RANGE	MEDIUM RANGE	LARGE RANGE
 <p>Diagram showing a cross-section of a bar trash screen for the Small Range. It features a vertical bar (labeled B) with a diameter of $\phi 10$ and a horizontal support (labeled A) with a height of 50 units. The support has a rounded top edge.</p>	 <p>Diagram showing a cross-section of a bar trash screen for the Medium Range. It features a vertical bar (labeled B) with a diameter of $\phi 12$ and a horizontal support (labeled A) with a height of 60 units. The support has a rounded top edge.</p>	 <p>Diagram showing a cross-section of a bar trash screen for the Large Range. It features a vertical bar (labeled B) with a diameter of $\phi 15$ and a horizontal support (labeled A) with a height of 70 units. The support has a rounded top edge.</p>

MATERIAL AVAILABILITY : MILD STEEL

STAINLESS STEEL GRADE 304

STAINLESS STEEL GRADE 316

OPTIONS

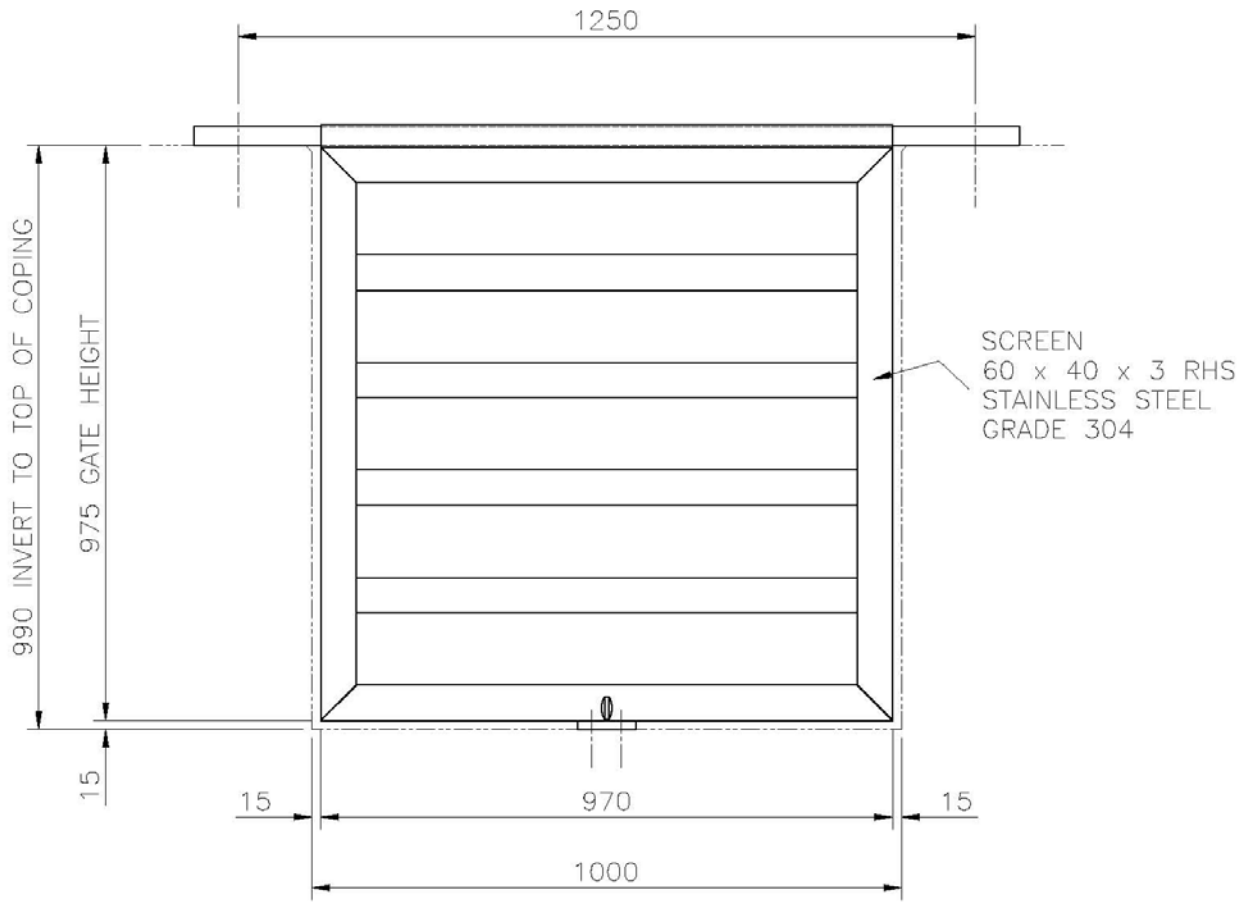
PART A

ANGLE, CHANNEL, FLAT OR ROUND BAR

PART B

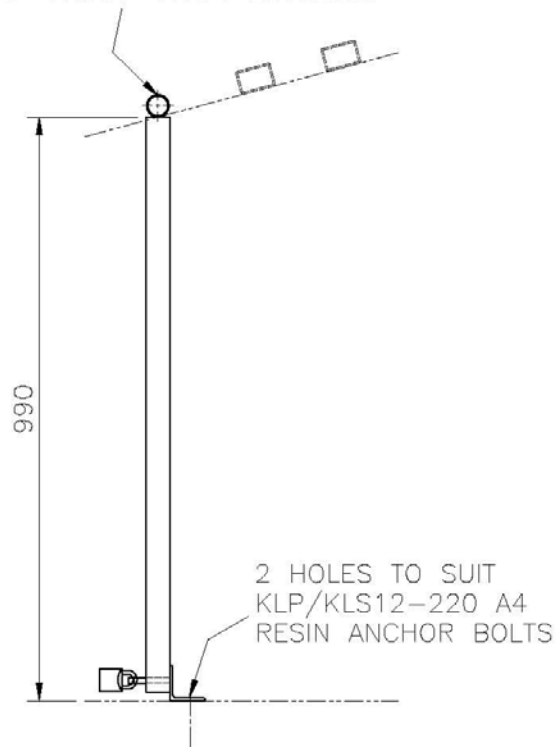
ROUND BAR OR FLAT

TYPICAL DRAWING OF SWING TYPE BAR TRASH SCREEN



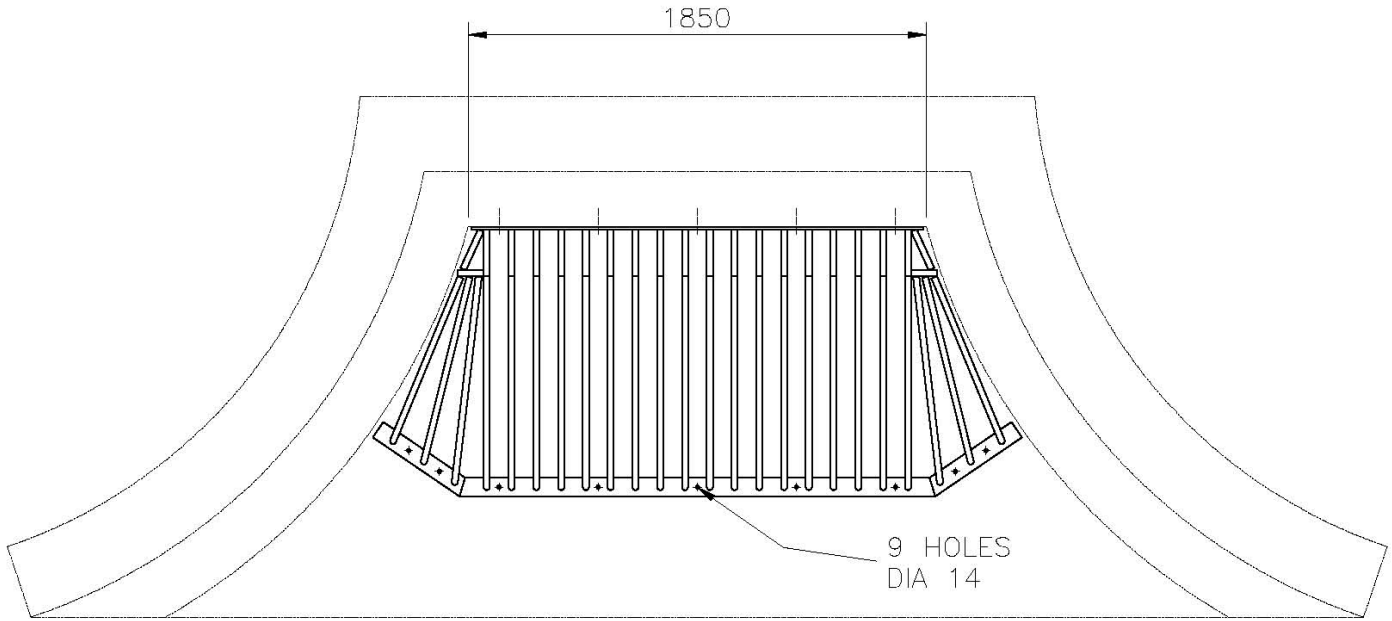
FRONT VIEW

REMOVE BOX AND REPLACE WITH
GATE AND CROSS-SHAFT ASSEMBLY

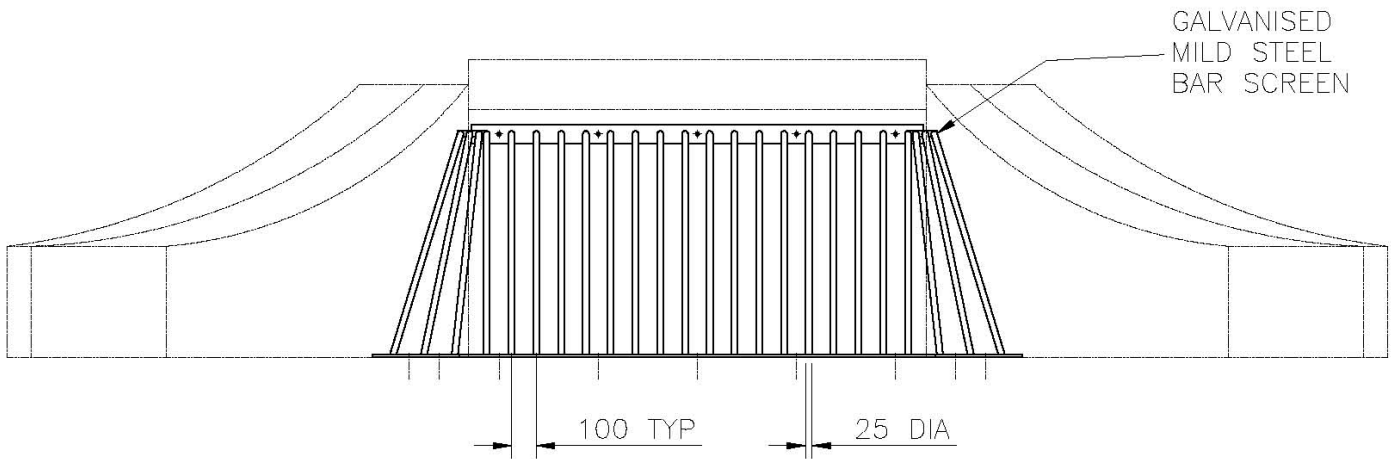


SIDE VIEW

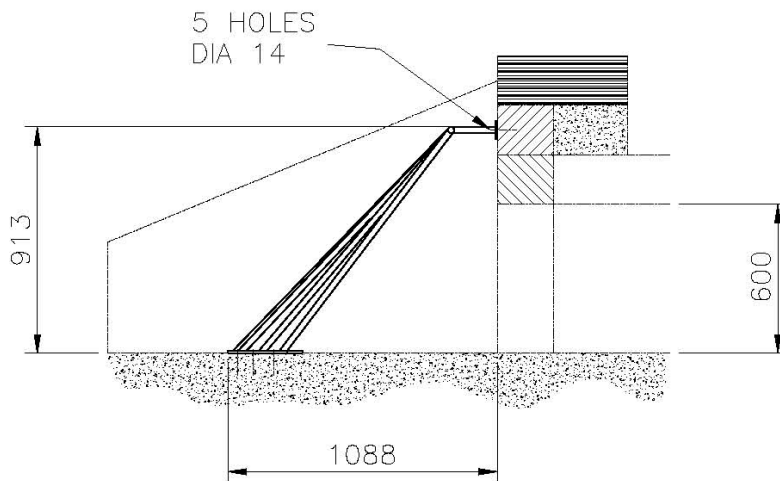
TYPICAL DRAWING OF FIXED TYPE BAR TRASH SCREEN



PLAN VIEW

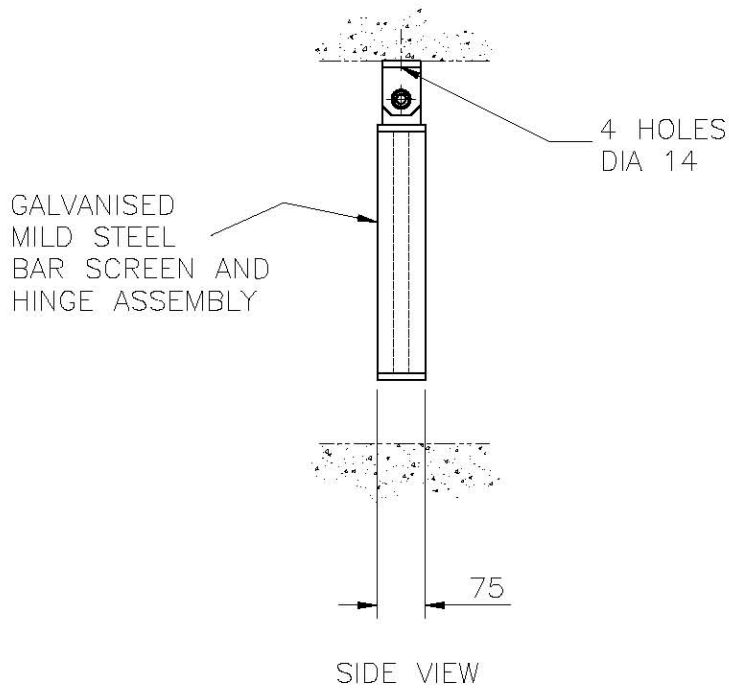
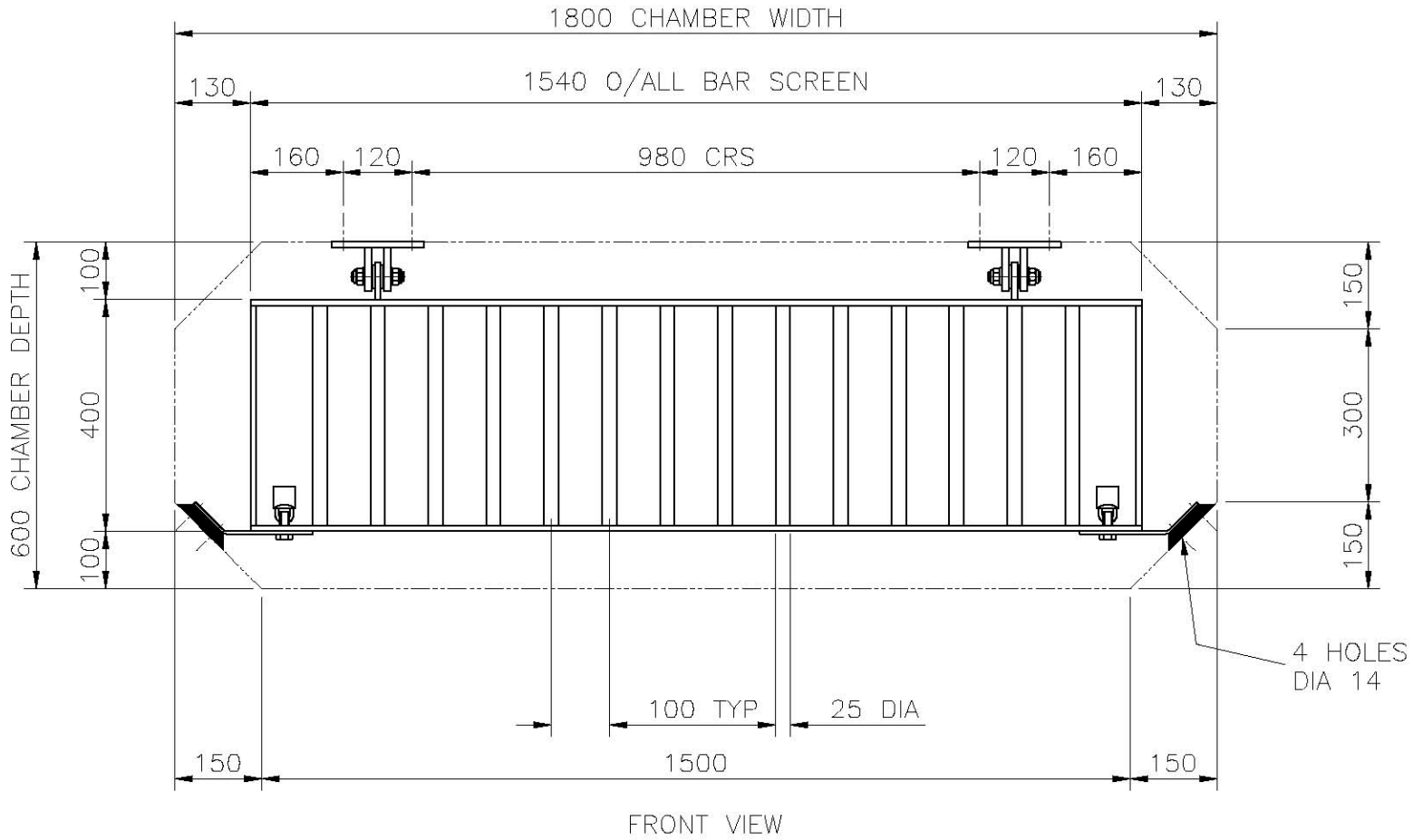


FRONT VIEW

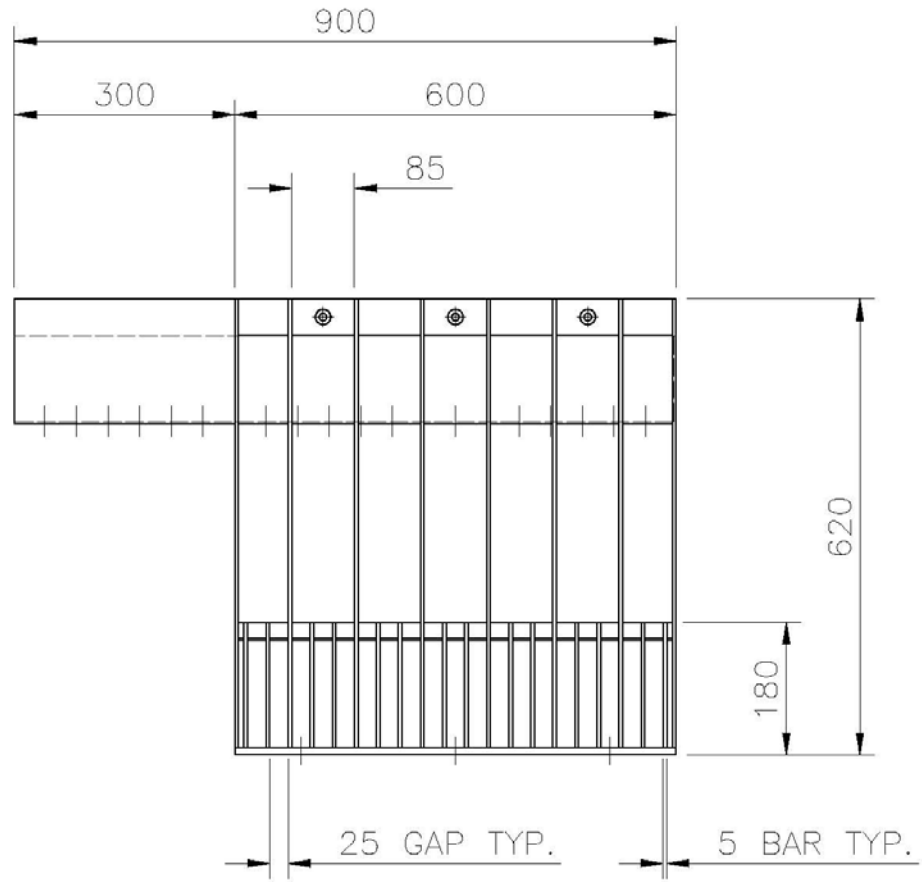


SIDE VIEW

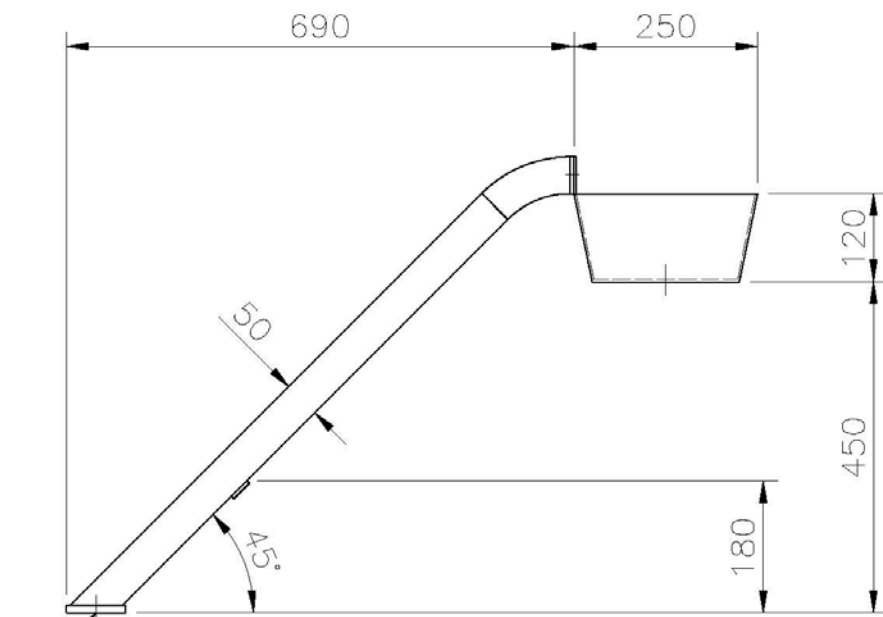
TYPICAL DRAWING OF HINGED TYPE BAR TRASH SCREEN



TYPICAL DRAWING OF FIXED TYPE c/w TROUGH BAR TRASH SCREEN



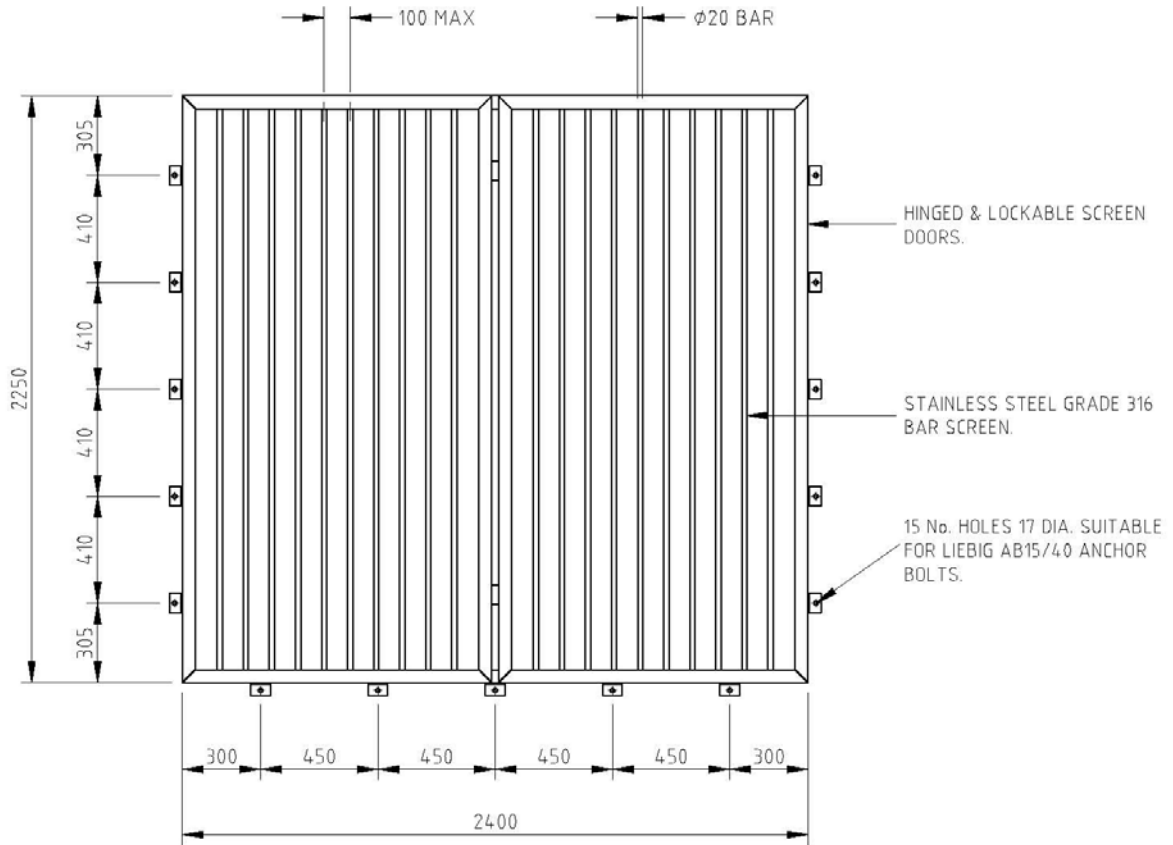
FRONT VIEW



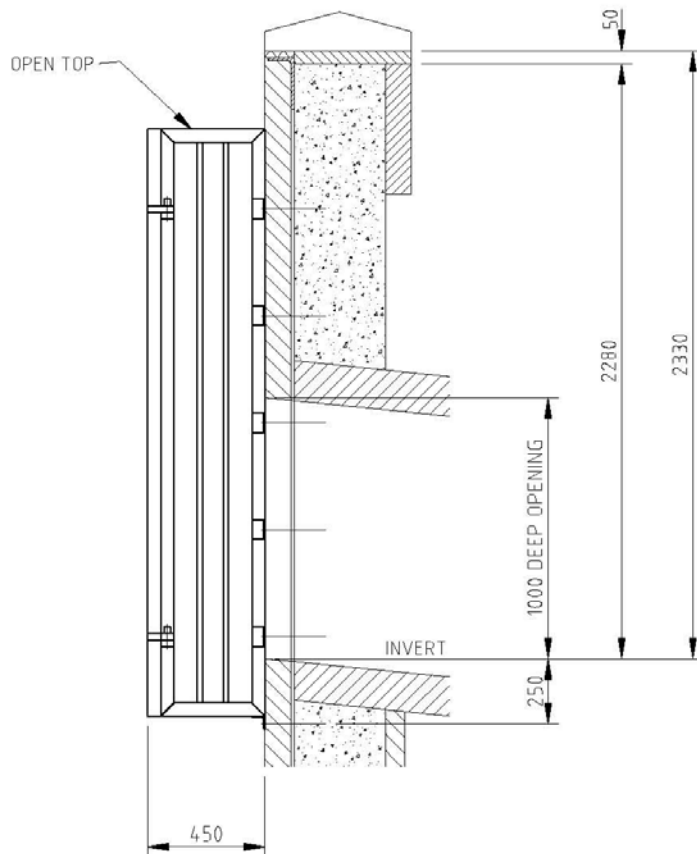
SIDE VIEW

3 HOLES DIA 14

TYPICAL DRAWING OF SIDE HINGED FRONT OPENING BAR TRASH SCREEN



FRONT ELEVATION



SIDE ELEVATION

**TYPICAL DRAWING OF
RAKE TO SUIT
BAR TRASH SCREEN**

